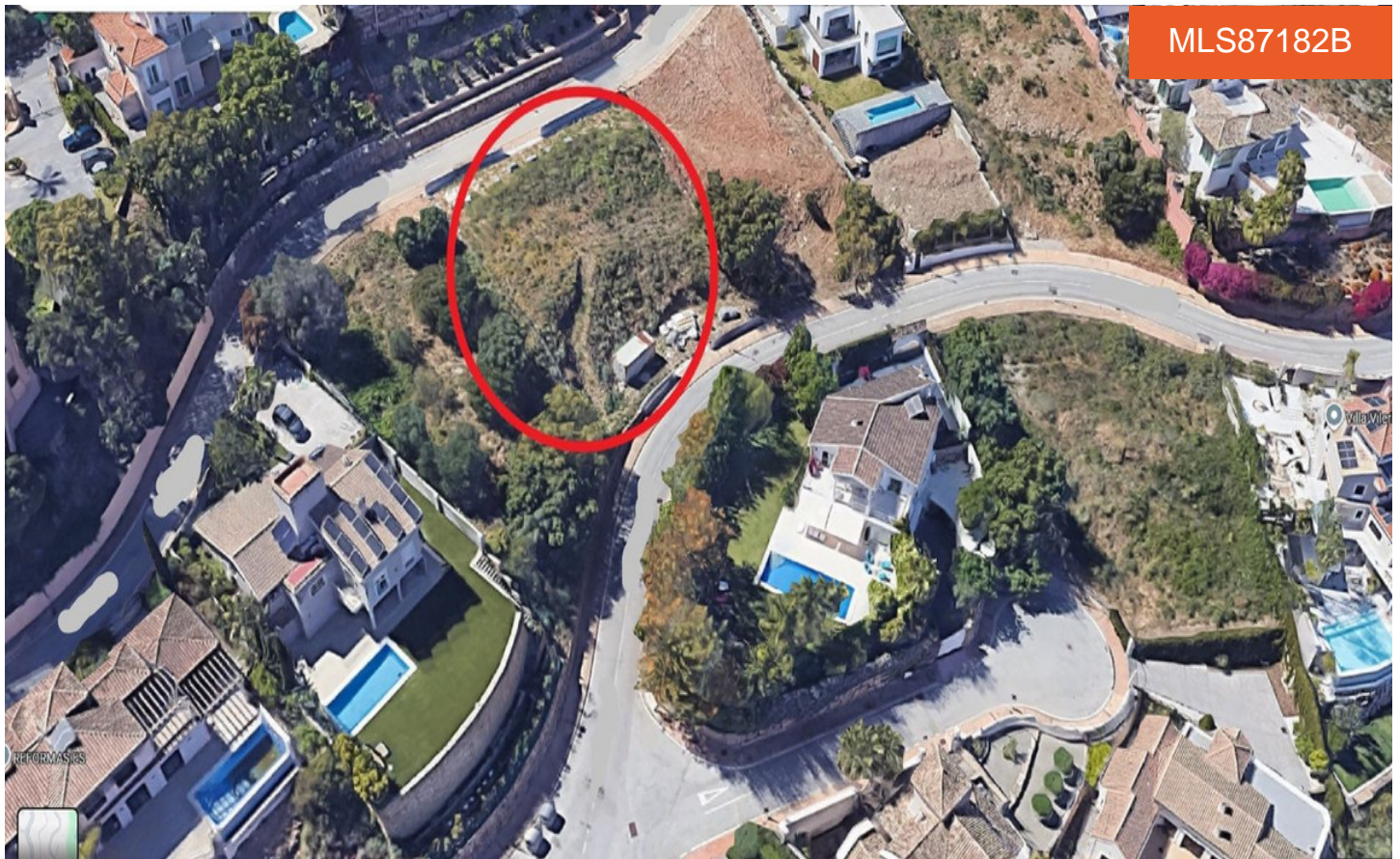
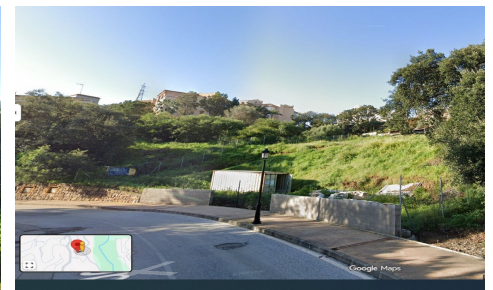


MLS87182B



## Land a Plots in Elviria

€530,000



0



0



N/A



1,088m<sup>2</sup>



N/A

Residential plot in Elviria, in the well-known area of Santa María Golf, just a step away from the golf course and all amenities, well-connected and only minutes away from Marbella and Puerto Banús, as well as the beach. It has access from two streets.

With a building capacity of 30%, suitable for an individual villa of 7.5m in height, allowing for a construction of 326m<sup>2</sup> + basement + terraces + porches.

There is an available project with license, for the construction of a total of 484.53m<sup>2</sup> villa spanning 4 floors.

The main floor would feature the entrance with access to a spacious open-style living and dining room with a kitchen. laundry room. and...(Ask for More Details!)