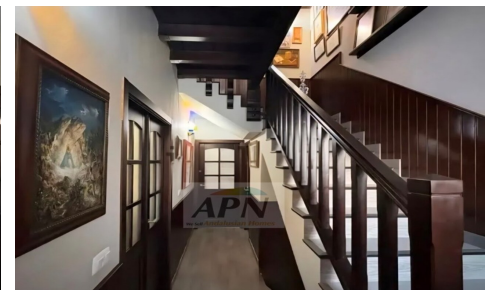
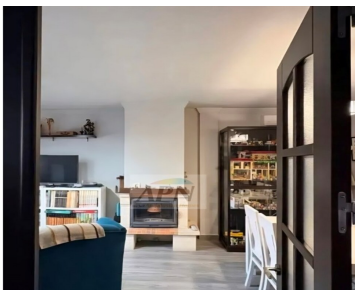


MLS13543C



Town House in Pizarra

€329,000



5



2



130m²



205m²



N/A

Corner semi-detached house in Pizarra, bright, spacious and ready to move into. Built in 2010, it has 205 m² built and about 200 m² useful, in a quiet, elevated area with unobstructed views, just a stone's throw from all services. On the ground floor there is a covered hall, a very bright living room with fireplace, an equipped kitchen, a toilet, a glazed patio with skylight and access to a large terrace-solarium, as well as two versatile rooms that can be used as bedrooms, an office or a living room. On the upper floor we find a cosy mezzanine-library, master bedroom with dressing room and direct access to the library, two single... (Ask for More Details!)